

DIAPHRAGM VALVE

TYPE 385

DN 15 - 80



Description

- small diaphragm valve with piston actuator
- extremely compact construction
- CIP+SIP sterilisation surface quality
- position indicator as option
- flexible diaphragm fixing
- encapsulated diaphragm

Technical parametres

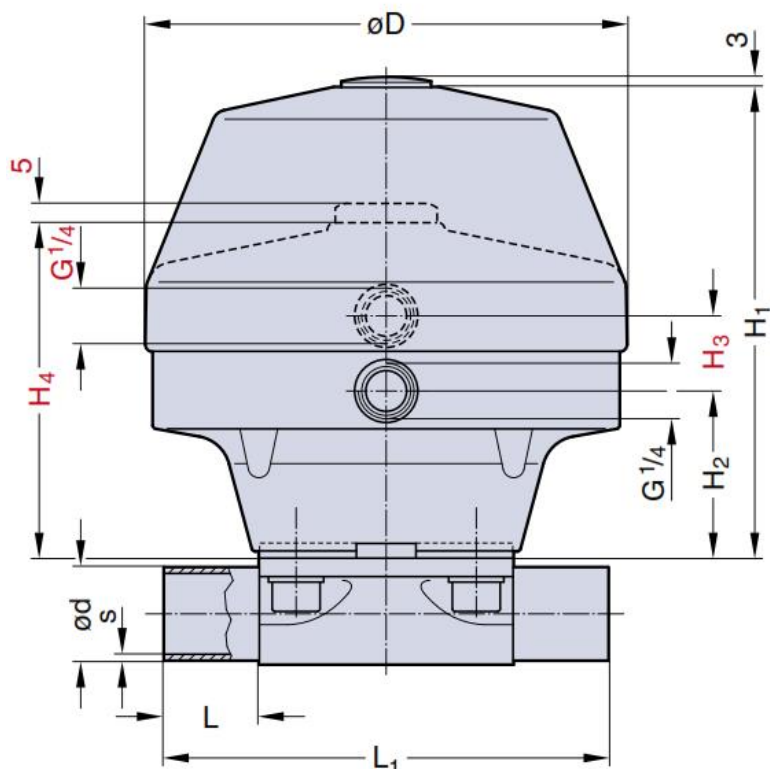
- **Actuator function:** NC, NO, DA
- **Maximal working temperature:** upto 95°C (upto 150°C extra charged available)
- **Maximal working pressure:**
DN15 . DN50
EPDM diaphragm = 10 bar
PTFE diaphragm = 8 bar
DN65 . DN80
EPDM diaphragm = 7 bar
PTFE diaphragm = 6 bar
- **Maximal air pressure:**
DN15 . DN 50 = 4,5 . 6 bar
DN65 . DN 80 = 4,5 . 7 bar
(NO, DA = 4 . 5,5 bar)
- **Connections:** butt weld, clamp, flanged

Materials:

- **Diaphragm:** EPDM or PTFE
- **Body:** forged 1.4435/316L
cast 1.4435/316L
(or others optional)
- **Actuator:** PP or IXEF

Dimensions (mm)

DN	MA	L	L ₁	H ₁	H ₂	H ₃	H ₄	D
15 - 25	25	25	120	130	49	31	97	130
32 - 40	40	25	153	176	77	31	131	161
50	50	30	173	214	91	31	161	217
65	80	30	216	269	121	41	229	265
80	80	30	254	321	121	41	278	265



TYPE 385