

DIAPHRAGM VALVE TYPE 407 DN 15 - 100



Description

- diaphragm valve with 2 piston high cycles actuator
- extremely compact construction . actuator dia smaller as diaphragm dia
- actuator is possible to turn 90°C
- outer surface
- CIP+SIP sterilisation surface quality
- position indicator
- flexible diaphragm fixing
- encapsulated diaphragm

Technical parametres

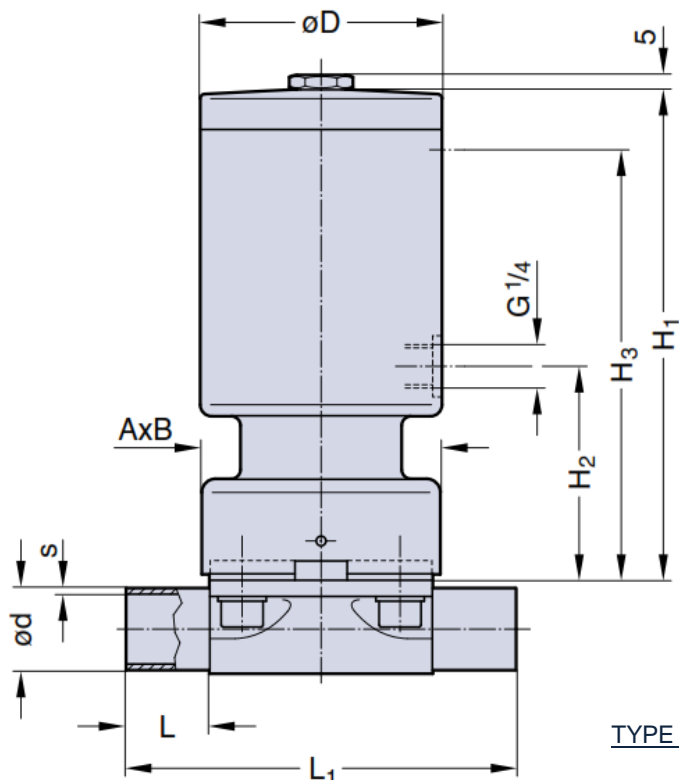
- **Actuator function** NC, NO, DA
- **Maximal working temperature:** upto 160°C (upto 150°C extra charged available)
- **Maximal air pressure:**
NC DN15 . DN80 = 5 . 8 bar
NC DN100 = 6 . 8 bar
NO&DA DN15 . DN80 = 4,5 . 6 bar
NO&DA DN 100 = 5,5 . 7 bar
- **Connection:** buttweld, clamp, flanged

Materials:

- **Diaphragm:** EPDM or PTFE
- **Body:** forged 1.4435/316L
cast 1.4435/316L
(or others optional)

Dimensions (mm)

DN	MA	L	L ₁	A x B	H ₁	H ₂	H ₃	D
15 - 25	25	25	120	73x79	151	66	133	75
32 - 40	40	25	153	96x105	180	75	160	105
50	50	30	173	111x130	216	77	180	105
65	80	30	216	190x170	309	135	285	175
80	80	30	254	190x170	309	135	285	175
100	100	30	305	Ø238	318	143	285	175



TYPE 407