



**HIGH PERFORMANCE 3-PIECE
BALL VALVE
SERIE 70
DN15-50 PN63 – DN65-100 PN40**



with stem extension

Description

- high cycles stem design
- precisely machined acc. to ISO5211
- anti-static device for ball-stem-body
- full port construction
- blow-out proof stem

Operation

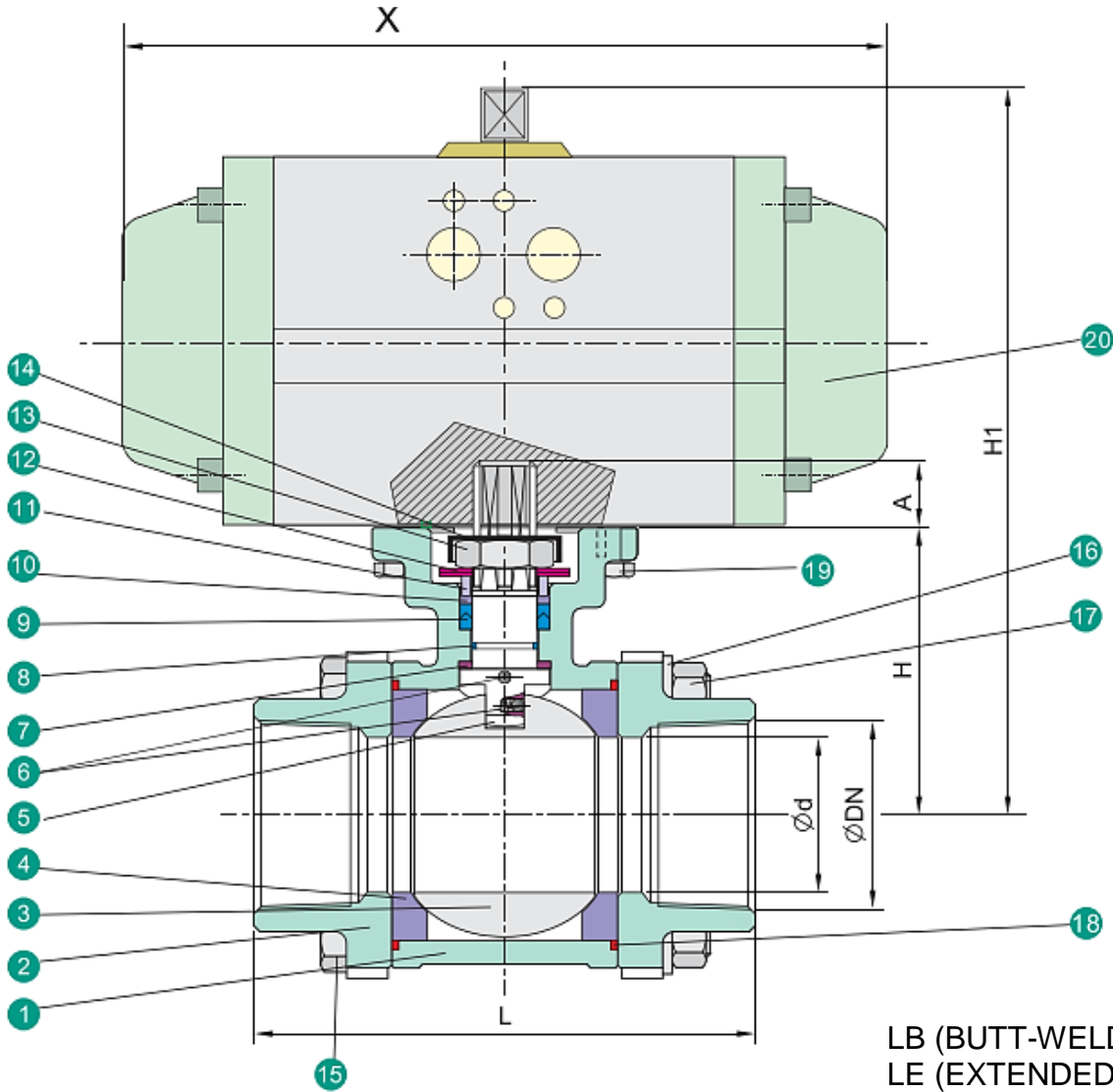
- lever
- gear box
- electric actuator
- pneumatic actuator

Available connections

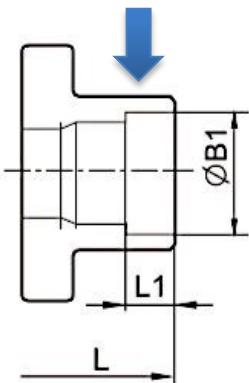
- flanged, butt weld, socket weld
BSP

**HIGH PERFORMANCE 3-PIECE
BALL VALVE
SERIE 70
DN15-50 PN63 – DN65-100 PN40**

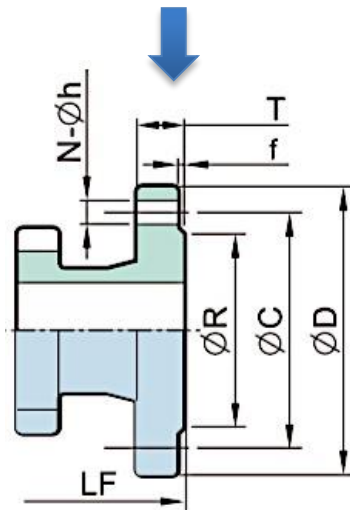
Drawing



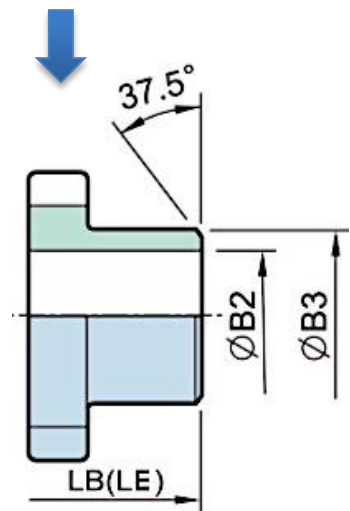
SOCKET WELDED END



FLANGED END
PN10-40 F1



LB (BUTT-WELDING END)
LE (EXTENDED BUTT-
WELDING END)





**HIGH PERFORMANCE 3-PIECE
BALL VALVE
SERIE 70
DN15-50 PN63 – DN65-100 PN40**

Dimensions /mm/

DN	Ød	L	LB	LE	LF	A	X	L1	ØB1	ØB2	ØB3
8	10,6	75	70	165	-	9	144	10	14,2	9,3	18
10	12,7	75	70	165	-	9	144	10	17,8	12,7	18
15	15	75	75	165	130	9	144	10	21,8	15,8	22
20	20	80	90	190	150	9	144	13	27,3	20,9	28
25	25	90	100	216	160	11	164	13	34	26,7	34
32	32	110	110	229	180	11	164	16	42,8	35,1	43
40	38	120	125	241	200	14	208	16	48,9	40,9	50
50	50	140	150	292	230	14	208	17	61,4	52,5	61
65	63,5	185	190	330	290	17	248	17	74	62,7	76
80	76	205	220	356	310	17	268	17	90	78	92
100	100	240	270	432	350	22	345	20	115,4	102,4	115

DN	H	C	R	D	N	h	H1	X
8	42	-	-	-	-	-	-	-
10	42	-	-	-	-	-	-	-
15	42	65	45	95	4	14	-	-
20	48,5	75	58	105	4	14	-	-
25	58,5	85	68	115	4	14	-	-
32	63	100	78	140	4	18	-	-
40	71,3	110	88	150	4	18	-	-
50	78,2	125	102	165	4	18	-	-
65	100	145	122	185	8	18	-	-
80	108,5	160	138	200	8	18	-	-
100	140	190	162	235	8	22	-	-

Part list

#	Part	Materials			#	Part	Materials
1	Body	CF8M	CF8	WCB	11	Gland	SUS316
2	Cap (Thread)	CF8M	CF8	WCB	12	Belleville Washer	SUS301
	Cap (Welding)	CF3M			13	Stem nut	A194-8
3	Ball	CF8M	CF8		14	Stop-Lock-Cap	SUS304
4	Ball seat	TFM1600/PTFE/RTFE			15	Bolting	A193-8
5	Stem	SUS316	SUS304		16	Bolt washer	SUS304
6	Anti-Static device	SUS316	SUS304		17	Bolt nut	A194-8
7	Thrust washer	PTFE			18	Body gasket	PTFE
8	O-Ring	FKM			19	Hex bolting	A193-B8
9	Stem packing	PTFE			20	Actuator	Pneumatic / Electric act.
10	Bushing	50%SS+50%PTFE					



**HIGH PERFORMANCE 3-PIECE
BALL VALVE
SERIE 70
DN15-50 PN63 – DN65-100 PN40**

Pressure - Temperature

