

## DIAPHRAGM VALVE TYPE 985 DN 15 - 100



### Materials:

- **Diaphragm:** EPDM or PTFE
- **Body:** forged 1.4435/316L  
cast 1.4435/316L  
(or others optional)

### Description

- diaphragm valve hand operated
- cover and hand wheel made of plastic
- non-rising hand wheel
- CIP+SIP sterilisation surface quality
- changeable limit stops
- flexible diaphragm fixing

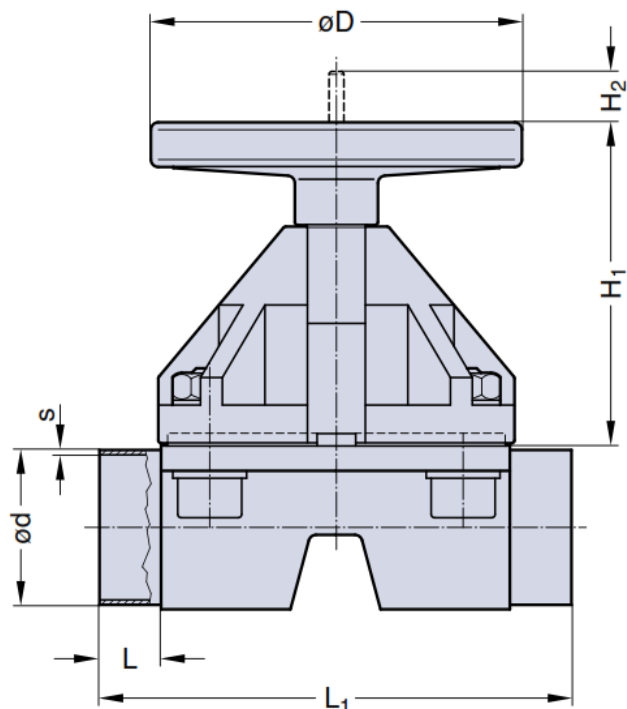
### Technical parametres

- **Maximal working temperature:**  
PP execution = 80°C  
XF execution = 150°C
- **Maximal working pressure:**  
10 bar  
PTFE diaphragm, DN65 . DN100 = 8 bar
- **Connection:** buttweld, clamp, flanged

### Dimensions (mm)

DN	MA	L	L <sub>1</sub>	H <sub>1</sub>	H <sub>2</sub>	D
15 - 25	25	25	120	71	10	90
32 - 40	40	25	153	91	14	114
50	50	30	173	110	23	140
65	80	30	216	180	38	198
80	80	30	254	180	38	198
100	100	30	305	220	50	252

TYPE 985 / DN65 . DN100



TYPE 985 / DN15 . DN50

