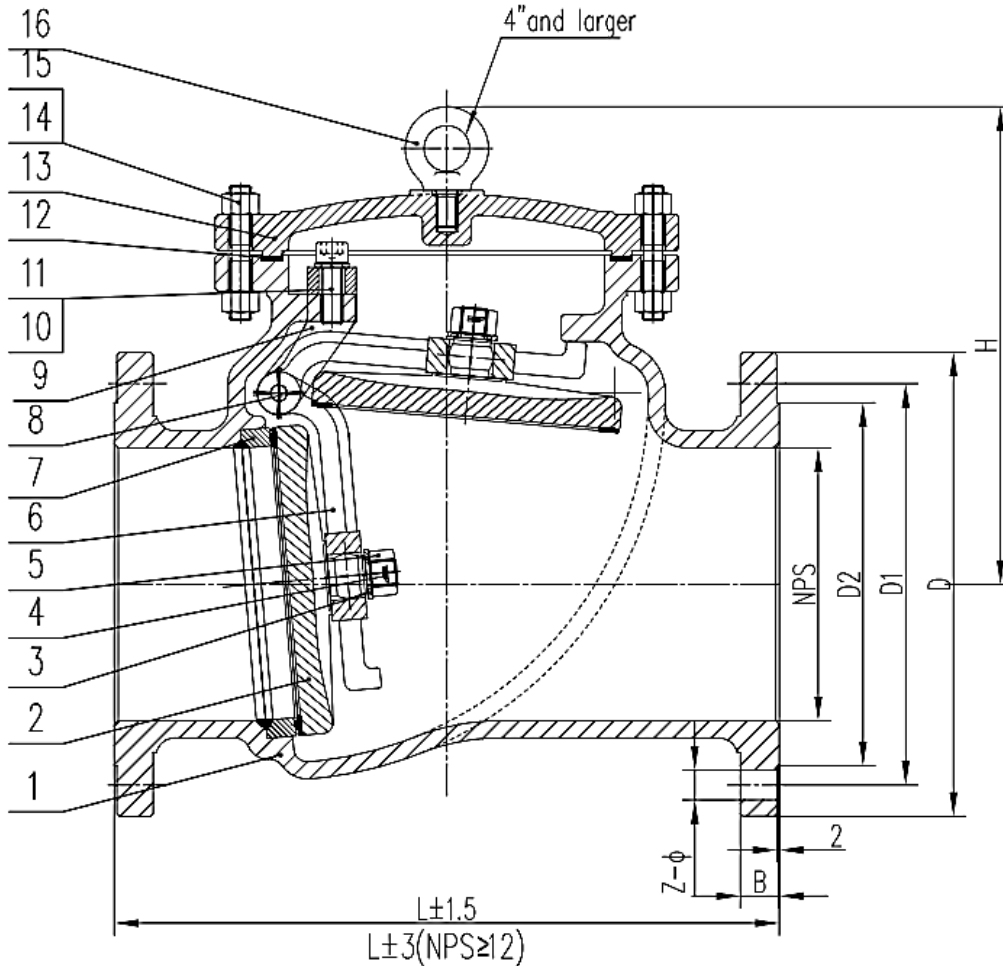


## CHECK VALVE TYPE CKV 2%<sub>00</sub> 24%<sub>00</sub> CLASS 150

### Class 150: 2" Ě 24"



### Components

No.	Part	Material
1	Body	ASTM A216 WCB / ASTM A351 CF8
2	Disc	ASTM A216 WCB+13Cr / ASTM A351 CF8
3	Plain washer	C.S / S.S
4	Split cotter	C.S / S.S
5	Nut	ASTM A194 2H / ASTM A194 8
6	Hing	ASTM A216 WCB / ASTM A351 CF8
7	Seat	ASTM A105+13Cr / ASTM A351 CF8
8	Pin	ASTM A276 WCB 410 / ASTM A276 304
9	Fork pare	ASTM A216 WCB / ASTM A351 CF8
10	Bolt	ASTM A193 B7 / ASTM A193 B8

No.	Part	Material
11	Spring washer	65 Mn / S.S
12	Gasket	SS304+GRAPHITE / SS304+GRAPHITE
13	Bonnet	ASTM A216 WCB / ASTM A351 CF8
14	Nut	ASTM A194 2H / ASTM A194 8
15	Stud	ASTM A193 B7 / ASTM A193 B8
16	Hook screw	STEEL



Elišky Přemyslovny 1343

156 00 Praha 5, mapol@iol.cz

tel: +420 257 921 545, fax: +420 257 921 659

## GLOBE VALVE

TYPE CKV

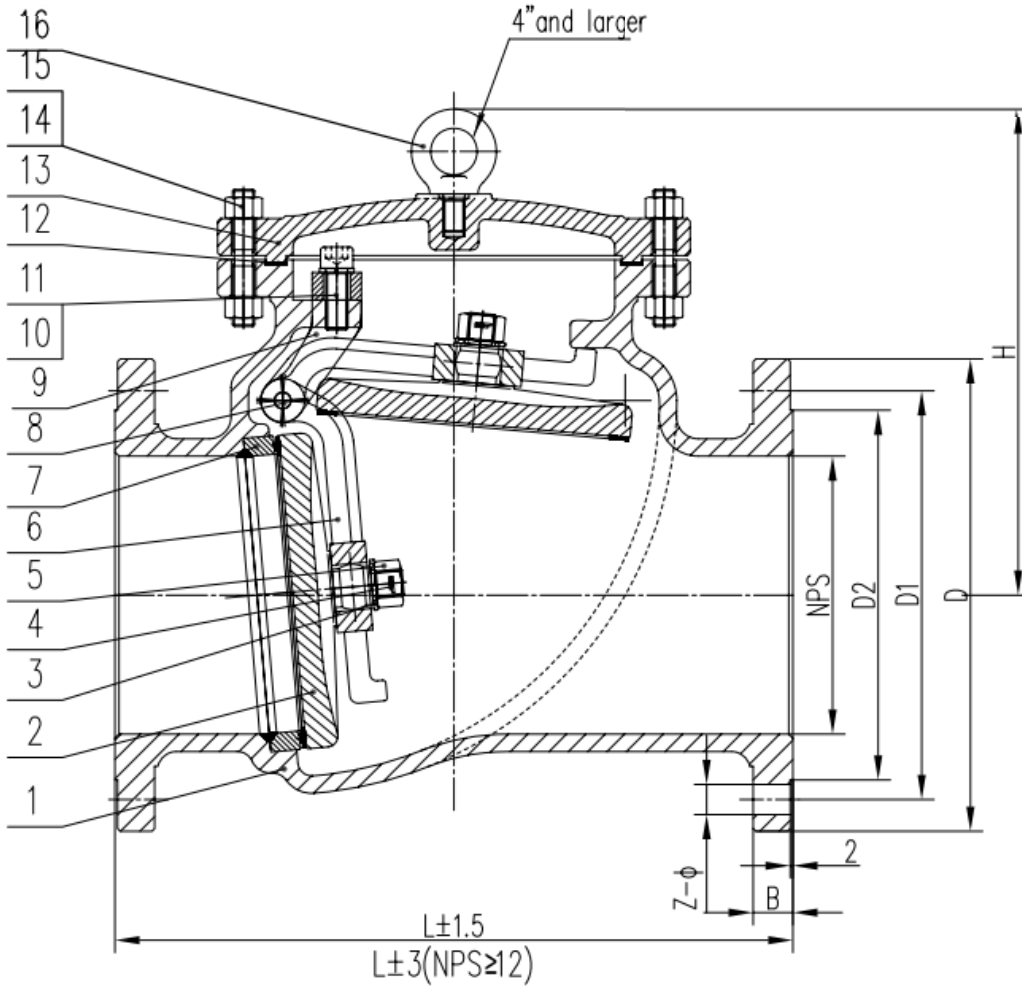
2‰- 24‰

CLASS150

### Dimensions /mm/

Size	L	D	D1	D2	B	H	Z-Ø
2"	203	150	120,7	92	16,3	144	4-Ø19
3"	241	190	152,4	127	19,5	171	4- Ø19
4"	292	230	190,5	157	24,3	255	8- Ø19
6"	356	280	241,3	216	25,9	314	8- Ø22
8"	495	345	298,5	270	29	355	8- Ø22
10"	622	405	362	324	30,6	405	12-Ø25,4
12"	698	485	431,8	381	32,2	460	12-Ø25,4
14"	787	535	476,3	413	35,4	515	12-Ø28,5
16"	864	595	539,8	470	37	595	16-Ø28,5
18"	978	635	577,9	533	40,1	655	16-Ø32
20"	978	700	635	584	43,3	686	20-Ø32
24"	1295	815	749,3	692	48,1	828	20-Ø35

## Class 300: 2Í Ě 24Í



## Components

No.	Part	Material
1	Body	ASTM A216 WCB / ASTM A351 CF8
2	Disc	ASTM A216 WCB+13Cr / ASTM A351 CF8
3	Plain washer	C.S / S.S
4	Split cotter	C.S / S.S
5	Nut	ASTM A194 2H / ASTM A194 8
6	Hing	ASTM A216 WCB / ASTM A351 CF8
7	Seat	ASTM A105+13Cr / ASTM A351 CF8
8	Pin	ASTM A276 WCB 410 / ASTM A276 304
9	Fork pare	ASTM A216 WCB / ASTM A351 CF8
10	Bolt	ASTM A193 B7 / ASTM A193 B8

No.	Part	Material
11	Spring washer	65 Mn / S.S
12	Gasket	SS304+GRAPHITE / SS304+GRAPHITE
13	Bonnet	ASTM A216 WCB / ASTM A351 CF8
14	Nut	ASTM A194 2H / ASTM A194 8
15	Stud	ASTM A193 B7 / ASTM A193 B8
16	Hook screw	STEEL



Elišky Přemyslovny 1343  
156 00 Praha 5, mapol@iol.cz  
tel: +420 257 921 545, fax: +420 257 921 659

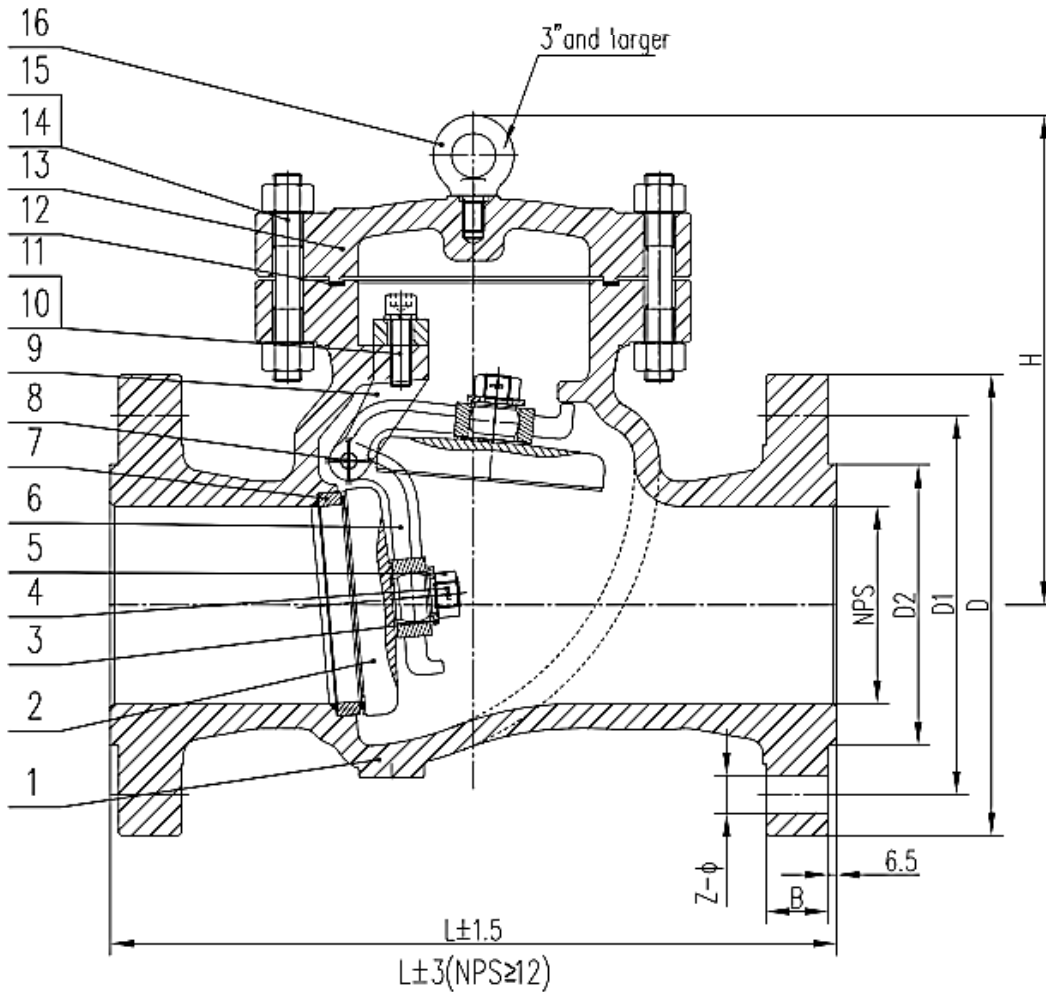
**CHECK VALVE**  
**TYPE CKV**  
**2‰- 24‰**  
**CLASS 300**

**Dimensions /mm/**

Size	L	D	D1	D2	B	H	Z-Ø
2"	267	165	127	92	22,7	162	8-Ø19
3"	318	210	168,3	127	29	202	8-Ø22
4"	356	255	200	157	32,2	278	8-Ø22
6"	444	320	269,9	216	37	332	12-Ø22
8"	533	380	330,2	270	41,7	391	12-Ø25,4
10"	622	445	387,4	324	48,1	460	16-Ø28,5
12"	711	520	450,8	381	51,3	475	16-Ø32
14"	838	585	514,4	413	54,4	550	20-Ø32
16"	864	650	571,5	470	57,6	613	20-Ø35
18"	978	710	628,6	533	60,8	661	24-Ø35
20"	1016	775	685,8	584	64	741	24-Ø35
24"	1346	915	812,8	692	70,3	913	24-Ø41

## CHECK VALVE TYPE CKV 2%<sub>00</sub> 24%<sub>00</sub> CLASS 600

### Class 600: 2Í Ě 24Í



### Components

No.	Part	Material
1	Body	ASTM A216 WCB / ASTM A351 CF8
2	Disc	ASTM A216 WCB+13Cr / ASTM A351 CF8
3	Plain washer	C.S / S.S
4	Split cotter	C.S / S.S
5	Nut	ASTM A194 2H / ASTM A194 8
6	Hing	ASTM A216 WCB / ASTM A351 CF8
7	Seat	ASTM A105+13Cr / ASTM A351 CF8
8	Pin	ASTM A276 WCB 410 / ASTM A276 304
9	Fork pare	ASTM A216 WCB / ASTM A351 CF8
10	Bolt	ASTM A193 B7 / ASTM A193 B8

No.	Part	Material
11	Spring washer	65 Mn / S.S
12	Gasket	SS304+GRAPHITE / SS304+GRAPHITE
13	Bonnet	ASTM A216 WCB / ASTM A351 CF8
14	Nut	ASTM A194 2H / ASTM A194 8
15	Stud	ASTM A193 B7 / ASTM A193 B8
16	Hook screw	STEEL



Elišky Přemyslovny 1343  
156 00 Praha 5, mapol@iol.cz  
tel: +420 257 921 545, fax: +420 257 921 659

**CHECK VALVE**  
**TYPE CKV**  
2‰- 24‰  
**CLASS 600**

**Dimensions /mm/**

Size	L	D	D1	D2	D3	B	E	H	Z-Ø
2"	295	165	127	108	82,55	25,4	8	174	8-Ø19
3"	359	210	168,3	146	123,825	31,8	8	251	8-Ø22
4"	435	275	215,9	175	149,225	38,1	8	313	8-Ø25,4
6"	562	355	292,1	241	211,125	47,7	8	377	12-Ø28,5
8"	663	420	349,2	302	269,875	55,6	8	462	12-Ø32
10"	790	510	431,8	356	323,85	63,5	8	556	16-Ø35
12"	841	560	489	413	381	66,7	8	606	20-Ø35
14"	892	605	527	457	419,1	69,9	8	651	20-Ø38
16"	994	685	603,2	508	469,9	76,2	8	743	20-Ø41
18"	1095	745	654	578	533,4	82,6	8	805	20-Ø44
20"	1200	815	723,9	635	584,2	88,9	9,5	862	24-Ø44
24"	1407	940	838,2	749	692,15	101,6	11	977	24-Ø51