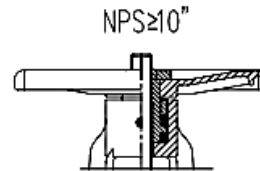
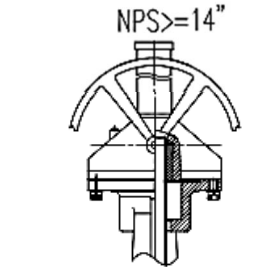
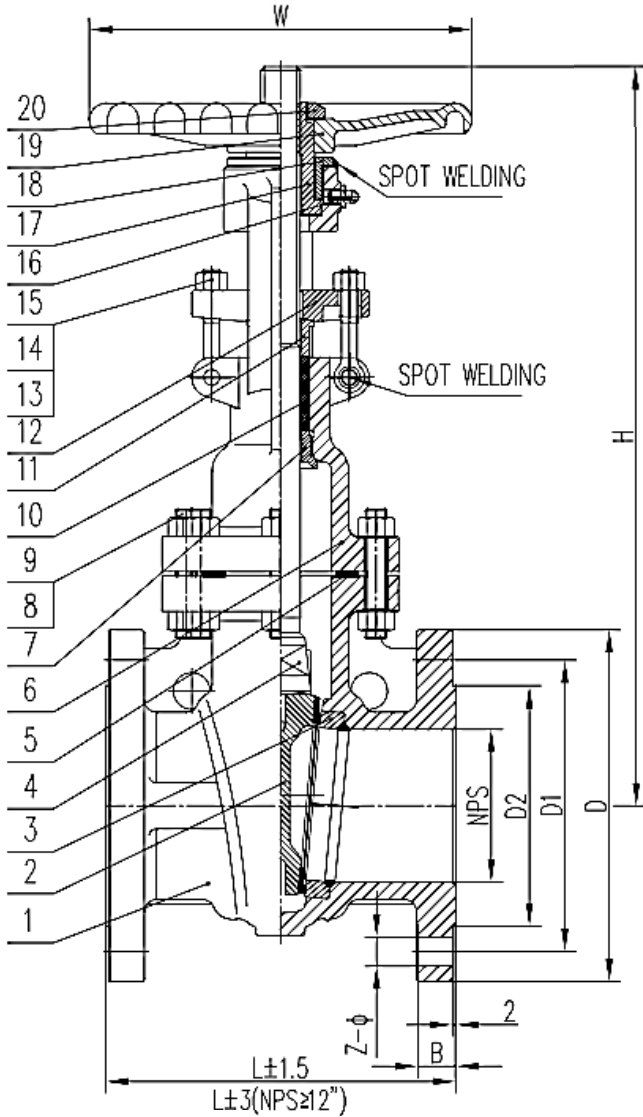


Class 150: 2Í Ě 24Í



Components

No.	Part	Material
1	Body	ASTM A216 WCB / ASTM A351 CF8
2	Wedge	ASTM A216 WCB+13Cr / ASTM A351 CF8
3	Seat	ASTM A105+13 Cr / ASTM A351 CF8
4	Stem	ASTM A182 / ASTM A182 F304
5	Gasket	SS304+GRAPHITE
6	Bonnet	ASTM A216 WCB / ASTM A351 CF8
7	Back seat	ASTM A182 / ASTM A351 CF8
8	Nut	ASTM A194 2H / ASTM A194 8
9	Stud	ASTM A193 B7 / ASTM A193 B8
10	Packing	GRAPHITE

No.	Part	Material
11	Gland	ASTM A186 F6 / ASTM A182 F304
12	Gland flange	ASTM A216 WCB / ASTM A351 CF8
13	Eye nut	ASTM A194 2H / ASTM A194 8
14	Eye stud	ASTM A193 B7 / ASTM A193 B8
15	Pin	C.S / S.S
16	Oil filter	COPPER ALLOY
17	Stem nut	COPPER ALLOY
18	Gland nut	C.S
19	Handwheel	KT330-8
20	Lock nut	C.S



Elišky Přemyslovny 1343

156 00 Praha 5, mapol@iol.cz

tel: +420 257 921 545, fax: +420 257 921 659

GLOBE VALVE

TYPE GV

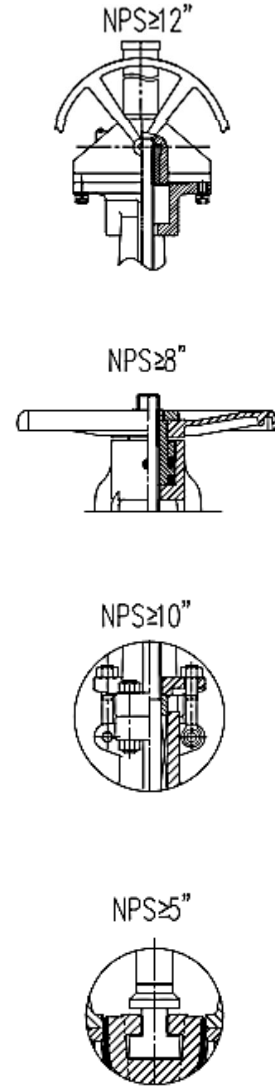
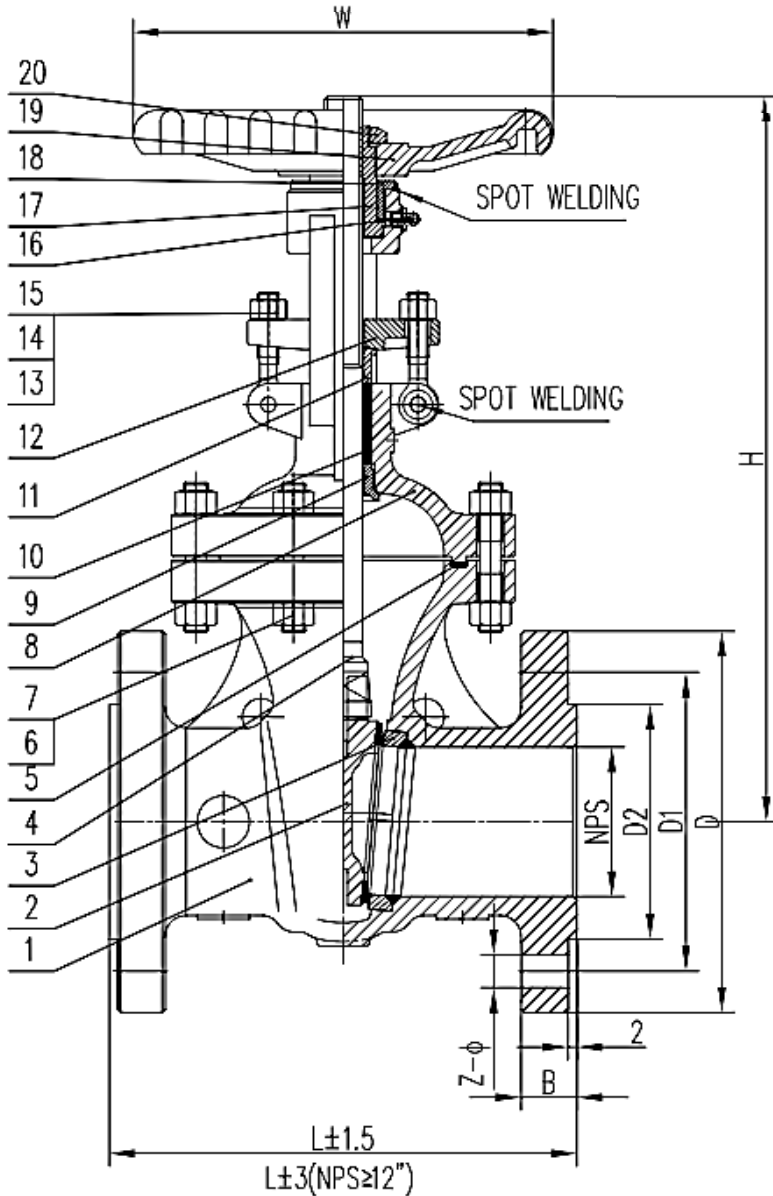
2‰- 24‰

CLASS150

Dimensions /mm/

Size	L	D	D1	D2	B	H	W	Z - ϕ
2"	178	150	120,7	92	16,3	333	200	4- ϕ 19
3"	203	190	152,4	127	19,5	400	220	4- ϕ 19
4"	229	230	190,5	157	24,3	483	250	8- ϕ 19
6"	267	280	241,3	216	25,9	581	300	8- ϕ 22
8"	292	345	298,5	270	29	729	350	8- ϕ 22
10"	330	405	362	324	30,6	905	400	12- ϕ 25,4
12"	356	485	431,8	381	32,2	1060	450	12- ϕ 25,4
14"	381	535	476,3	413	35,4	1253	460	12- ϕ 28,5
16"	406	595	539,8	470	37	1390	460	16- ϕ 28,5
20"	457	700	635	584	43,3	1660	460	20- ϕ 32
24"	508	815	749,3	692	48,1	2006	530	20- ϕ 35

Class 300: 2Í Ě 24Í



Components

No.	Part	Material
1	Body	ASTM A216 WCB / ASTM A351 CF8
2	Wedge	ASTM A216 WCB+13Cr / ASTM A351 CF8
3	Seat	ASTM A105+13Cr / ASTM A351 CF8
4	Stem	ASTM F6a / ASTM A182 F304
5	Gasket	SS304+GRAPHITE
6	Nut	ASTM A194 2H / ASTM A194 8
7	Stud	ASTM A193 B7 / ASTM A193 B8
8	Bonnet	ASTM A216 WCB / ASTM A351 CF8
9	Back seat	ASTM A182 F6 / ASTM A351 CF8
10	Packing	GRAPHITE

No.	Part	Material
11	Gland	ASTM A186 F6 / ASTM A182 F304
12	Gland flange	ASTM A216 WCB / ASTM A351 CF8
13	Eye nut	ASTM A194 2H / ASTM A194 8
14	Eye stud	ASTM A193 B7 / ASTM A193 B8
15	Pin	C.S / S.S
16	Oil filter	COPPER ALLOY
17	Stem nut	COPPER ALLOY
18	Gland nut	C.S
19	Handwheel	KT330-8
20	Lock nut	C.S



Elišky Přemyslovny 1343
156 00 Praha 5, mapol@iol.cz
tel: +420 257 921 545, fax: +420 257 921 659

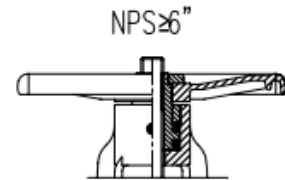
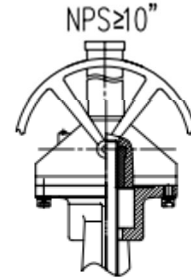
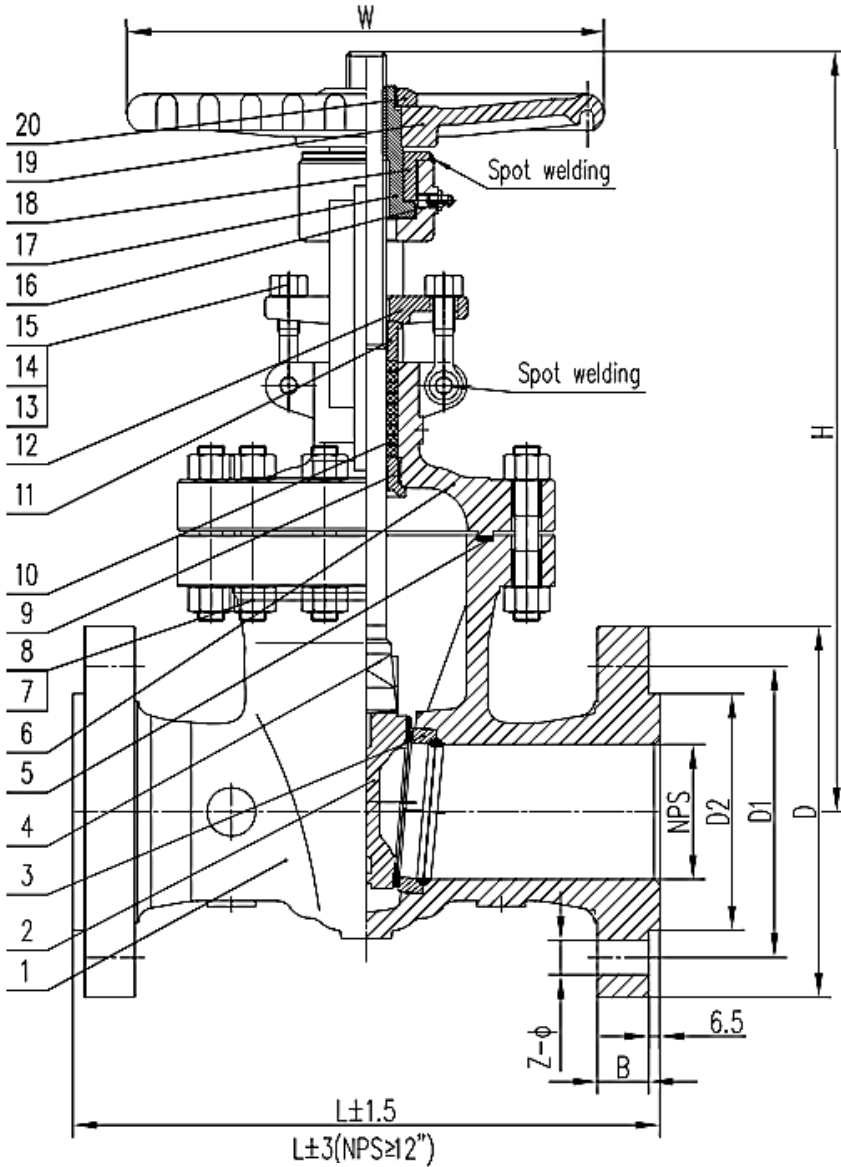
GATE VALVE
TYPE GTV
2‰- 24‰
CLASS 300

Dimensions /mm/

Size	L	D	D1	D2	B	H	W	Z - ϕ
2"	216	165	127	92	22,7	345	200	8- ϕ 19
3"	282	210	168,3	127	29	458	250	8- ϕ 22
4"	305	255	200	157	32,2	510	280	8- ϕ 22
6"	403	320	269,9	216	37	651	350	12- ϕ 22
8"	419	380	330,2	270	41,7	816	400	12- ϕ 25,4
10"	457	445	387,4	324	48,1	967	450	16- ϕ 28,5
12"	502	520	450,8	381	51,3	1200	460	16- ϕ 32
14"	762	585	514,4	413	54,4	1290	460	20- ϕ 32
16"	838	650	571,5	470	57,6	1465	460	20- ϕ 35
18"	914	710	628,6	533	60,8	1619	530	24- ϕ 35
20"	991	775	685,8	584	64	1780	530	24- ϕ 35
24"	1143	915	812,8	692	70,3	2195	600	24- ϕ 41

GATE VALVE TYPE GTV 2‰- 24‰ CLASS 600

Class 600: 2Í Ě 24Í



Components

No.	Part	Material
1	Body	ASTM A216 WCB / ASTM A351 CF8
2	Wedge	ASTM A216 WCB+13Cr / ASTM A351 CF8+STL
3	Seat	ASTM A105+13Cr / STL
4	Stem	ASTM A182 F6a / ASTM A182 F304
5	Gasket	SS304+GRAPHITE
6	Bonnet	ASTM A216 WCB / ASTM A351 CF8
7	Nut	ASTM A194 2H / ASTM A194 4
8	Stud	ASTM A193 B7 / ASTM A193 B16
9	Back seat	ASTM A182 F6 / ASTM A351 CF8
10	Packing	GRAPHITE

No.	Part	Material
11	Gland	ASTM A182 F6 / ASTM A182 F304
12	Gland flange	ASTM A216 WCB / ASTM A351 CF8
13	Eye nut	ASTM A194 2H / ASTM A194 4
14	Eye stud	ASTM A193 B7 / ASTM A193 B16
15	Pin	C.S / S.S
16	Oil filter	COPPER ALLOY
17	Stem nut	COPPER ALLOY
18	Gland nut	C.S
19	Handwheel	KT330-8
20	Lock nut	C.S



Elišky Přemyslovny 1343

156 00 Praha 5, mapol@iol.cz

tel: +420 257 921 545, fax: +420 257 921 659

GATE VALVE

TYPE GTV

2‰-24‰

CLASS 600

Dimensions /mm/

Size	L	D	D1	D2	B	H	W	Z-Ø
2"	292	165	127	92	25,4	341	250	8-Ø19
3"	356	210	168,3	127	31,8	452	300	8-Ø22
4"	432	275	215,9	157	38,1	483	350	8-Ø25,4
6"	559	355	292,1	216	47,7	673	450	12-Ø28,5
8"	660	420	349,2	270	55,6	853	500	12-Ø32
8"	660	420	349,2	270	55,6	942	460	12-Ø32
10"	787	510	431,8	324	63,5	1065	460	16-Ø35
12"	838	560	489	381	66,7	1251	530	20-Ø35
14"	889	605	527	413	69,9	1335	530	20-Ø38
16"	991	685	603,2	470	76,2	1515	530	20-Ø41
18"	1092	745	654	533	82,6	1780	600	20-Ø44
20"	1194	815	723,9	584	88,9	1923	600	24-Ø44
24"	1397	940	838,2	692	101,6	2177	600	24-Ø51

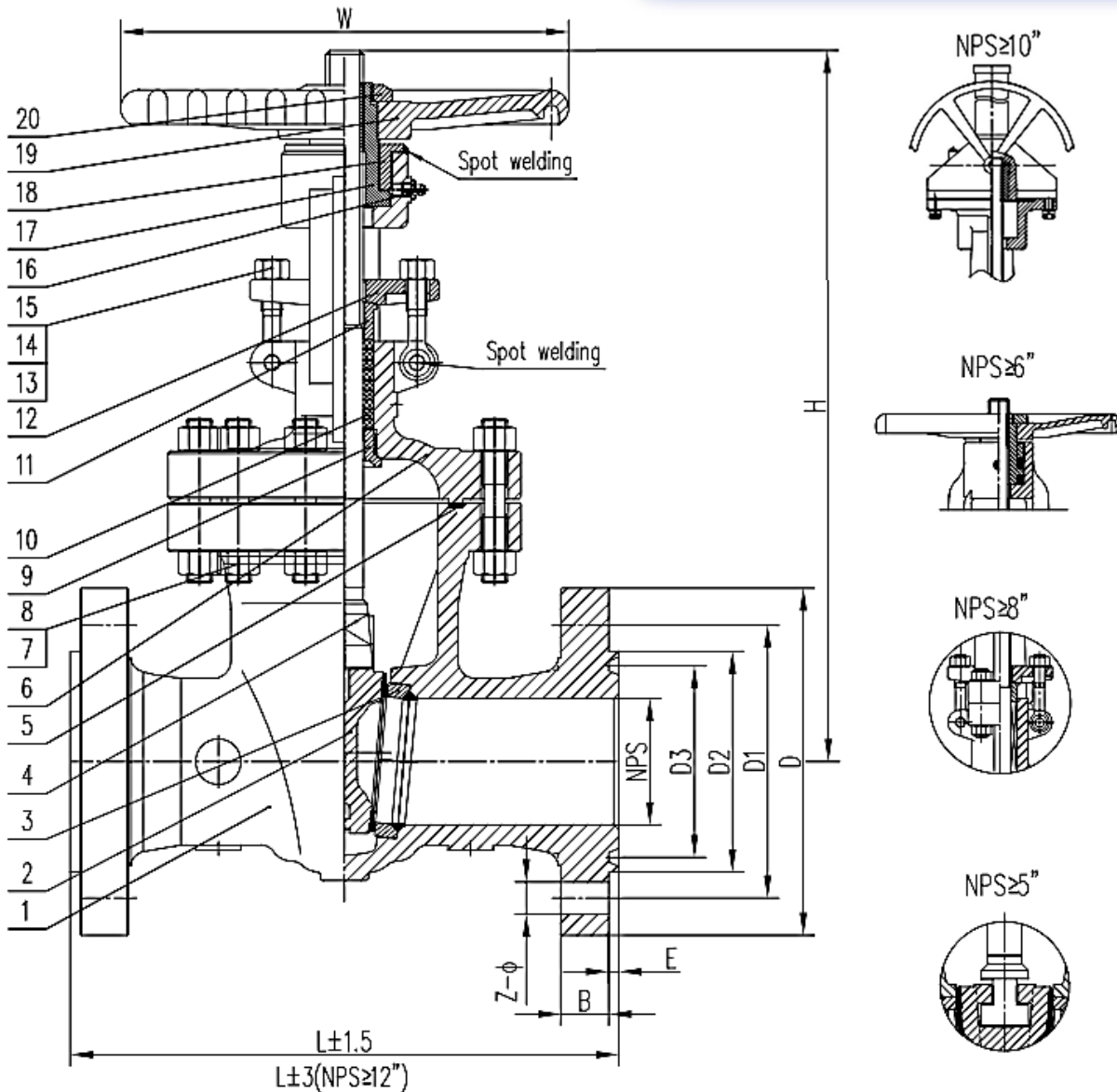
GATE VALVE

TYPE GTV

2%_{oo} 24%_{oo}

CLASS 600

Wedge gate



Components

No.	Part	Material
1	Body	ASTM A216 WCB / ASTM A351 CF8
2	Wedge	ASTM A216 WCB+13Cr / ASTM A351 CF8+STL
3	Seat	ASTM A105+13Cr / STL
4	Stem	ASTM A182 F6a / ASTM A182 F304
5	Gasket	SS304+GRAPHITE
6	Bonnet	ASTM A216 WCB / ASTM A351 CF8
7	Nut	ASTM A194 2H / ASTM A194 4
8	Stud	ASTM A193 B7 / ASTM A193 B16
9	Back seat	ASTM A182 F6 / ASTM A351 CF8
10	Packing	GRAPHITE

No.	Part	Material
11	Gland	ASTM A182 F6 / ASTM A182 F304
12	Gland flange	ASTM A216 WCB / ASTM A351 CF8
13	Eye nut	ASTM A194 2H / ASTM A194 4
14	Eye stud	ASTM A193 B7 / ASTM A193 B16
15	Pin	C.S / S.S
16	Oil filter	COPPER ALLOY
17	Stem nut	COPPER ALLOY
18	Gland nut	C.S
19	Handwheel	KT330-8
20	Lock nut	C.S



Elišky Přemyslovny 1343

156 00 Praha 5, mapol@iol.cz

tel: +420 257 921 545, fax: +420 257 921 659

GATE VALVE

TYPE GTV

2‰-24‰

CLASS 600

Wedge gate

Dimensions /mm/

Size	L	D	D1	D2	D3	B	E	H	W	Z-Ø
2"	295	165	127	108	82,55	25,4	8	341	250	8-Ø19
3"	359	210	168,3	146	123,83	31,8	8	452	300	8-Ø22
4"	435	275	215,9	175	149,23	38,1	8	483	350	8-Ø25,4
6"	562	355	292,1	241	211,13	47,7	8	673	450	12-Ø28,5
8"	663	420	349,2	302	269,88	55,6	8	853	500	12-Ø32
8"	663	420	349,2	302	269,88	55,6	8	942	460	12-Ø32
10"	790	510	431,8	356	323,85	63,5	8	1065	460	16-Ø35
12"	841	560	489	413	381	66,7	8	1251	530	20-Ø35
14"	892	605	527	457	419,1	69,9	8	1335	530	20-Ø38
16"	994	685	603,2	508	469,9	76,2	8	1515	530	20-Ø41
18"	1095	745	654	578	533,4	82,6	8	1780	600	20-Ø44
20"	1200	815	723,9	635	584,2	88,9	9,5	1923	600	24-Ø44
24"	1407	940	838,2	749	692,15	101,6	11	2177	600	24-Ø51