

## MAINTENANCE MANUAL

### BUTTERFLY VALVE M3 DN 40 – 90 PN 10/16

#### Montage

Butterfly valves series M1A are installed between flanges PN10 according to ČSN or DIN standards. Rubber seat is used to as flange gasket, another gasket is not needed. Butterfly valves are installed into horizontal or vertical pipelines. When installed into horizontal pipeline, we suggest the position with the horizontal axis of the stem.

#### Installation procedure

- 1) First of all make you sure that the space between flanges is sufficient to be able to put the butterfly between flanges without any scouring
- 2) Butterfly valve is installed in slightly opened position (5°- 10°)
- 3) Slightly tighten bolts and check the control of the valve (open to close positon)
- 4) Set the valve to the intermediate position
- 5) Cross tighten the flanges

#### Maintenance

Butterfly valve series M1A is maintenance-free and when used properly no further maintenance is required.

#### Disassebling

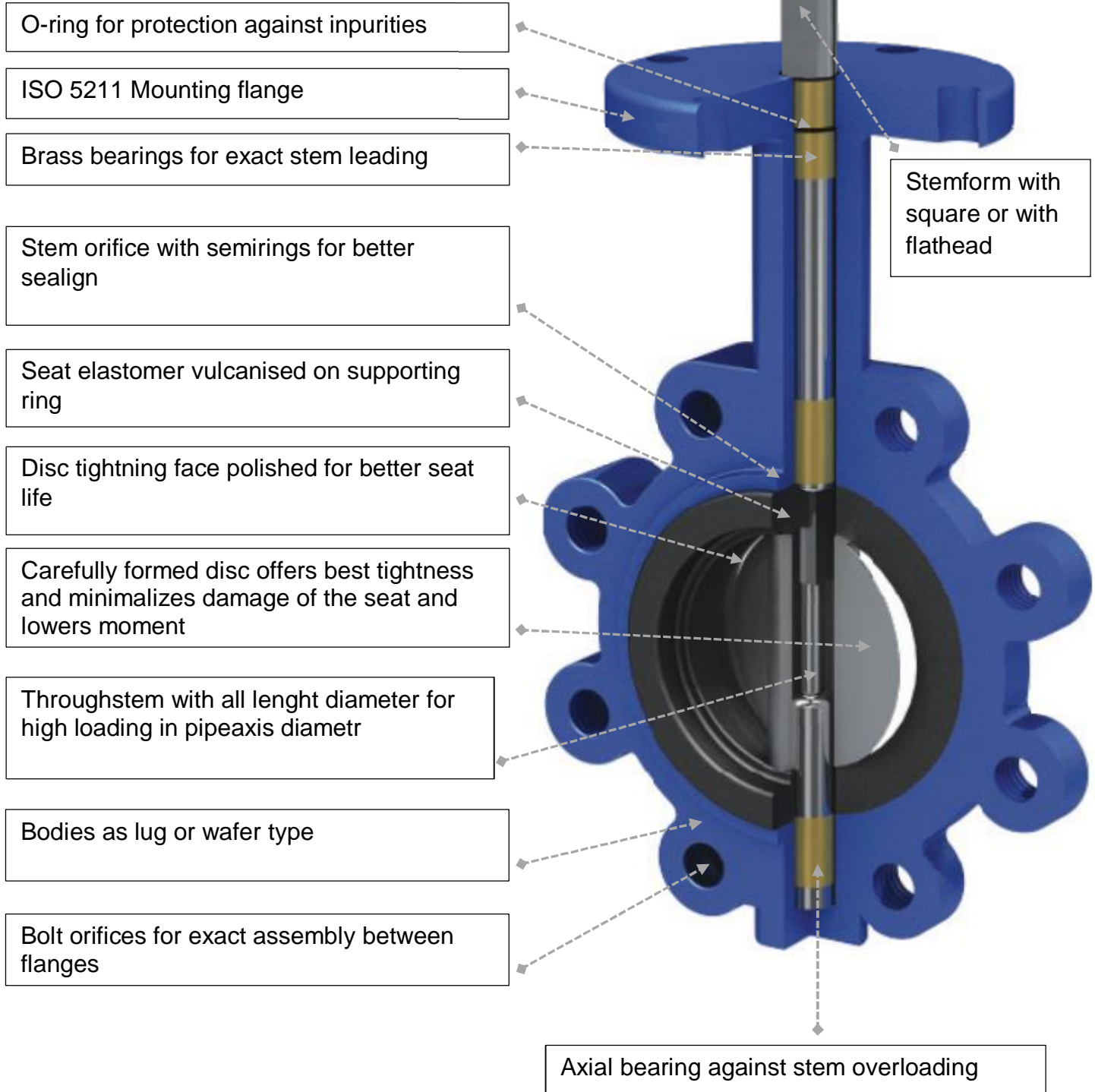
- 1) Remove the operating of the valve
- 2) Put out pins connecting the disc and stem of the valve
- 3) Remove the stem from the body
- 4) Remove the disc and rubber seat

#### Disassebling

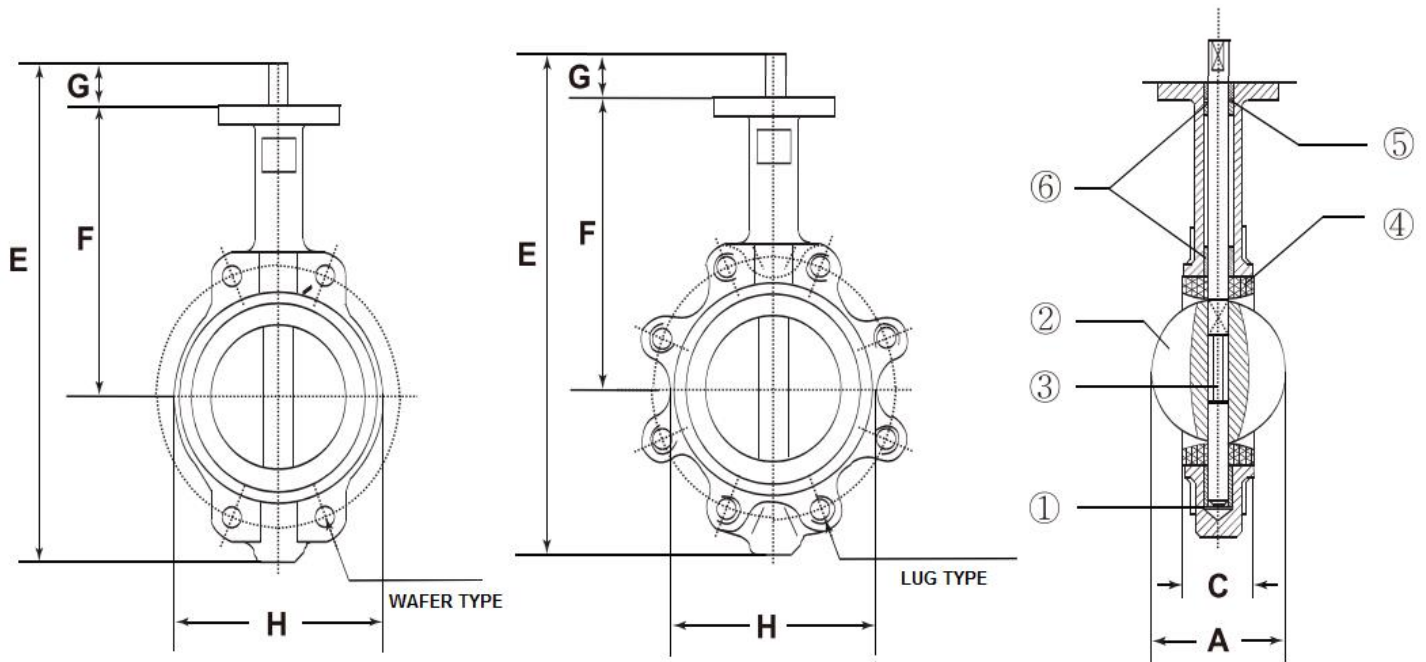
Please use the same procedure as you disassemble but proceed from back to front.

## MAINTENANCE MANUAL

BUTTERFLY VALVE M3  
DN 40 – 90 PN 10/16



#### Dimensions /mm/



DN	A	C	E	F	G	H	Wafer type	Lug type
50	53	42	273	161	32	100	4	5
65	64	45	296	175	32	120	5	5
80	89	45	308	181	32	127	5	6
100	104	52	346	200	32	165	6	10
125	123	54	372	213	32	185	8	11
150	155	56	397	226	32	212	9	13
200	202	61	480	260	45	268	16	22
250	250	67	540	292	45	341	21	31
300	301	77	614	337	45	400	35	49
350	331	77	680	368	45	436	43	72
400	390	87	748	400	51	490	52	90
450	441	106	788	422	51	539	87	111
500	492	132	922	480	58	593	98	123
600	593	152	1073	562	70	800	133	178