

Soft seated (DN50-300)

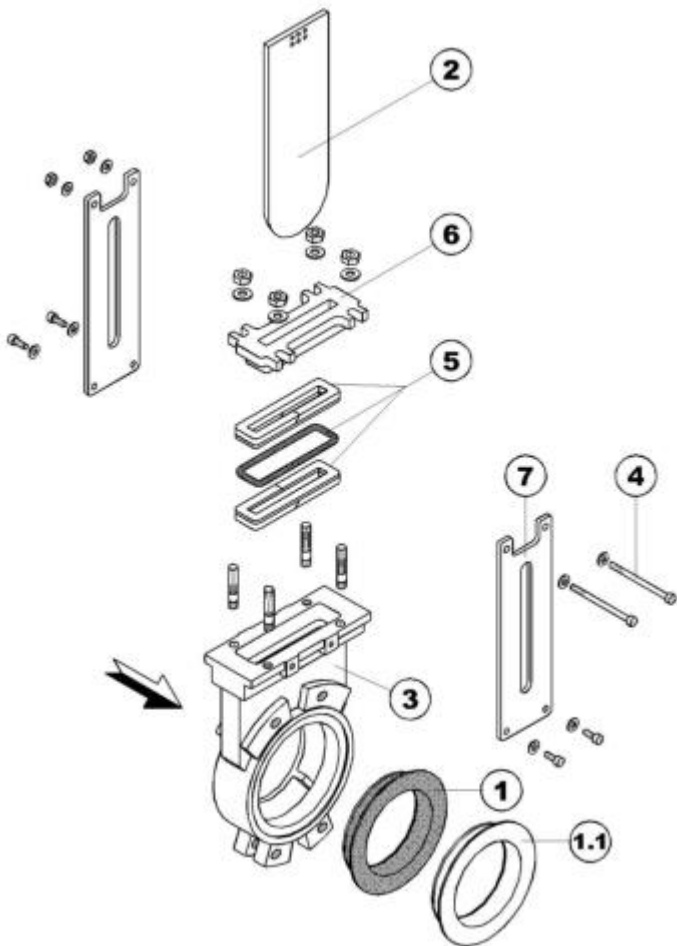


Description

- Uni-directional soft seated knife gate valve
- 100% tightness, zero leakage on one sense
- short face-to-face dimension; easy to install between flanges
- **3 body styles:** semi lugged
fully lug-between flanges
lug-end valve
- **execution:**
MUV . with rising stem
MUF . with non-rising stem
- knife gate valves are with full port without dead space
- **assembly:** vertical stem position is recommended
assembly between PN10/16
- **operation:** handwheel, lever (DN50-150), electric actuator, pneumatic actuator

KNIFE GATE VALVE UNI-directional, TYPE MU DN50 – 300, PN10 – 16

Components - specification



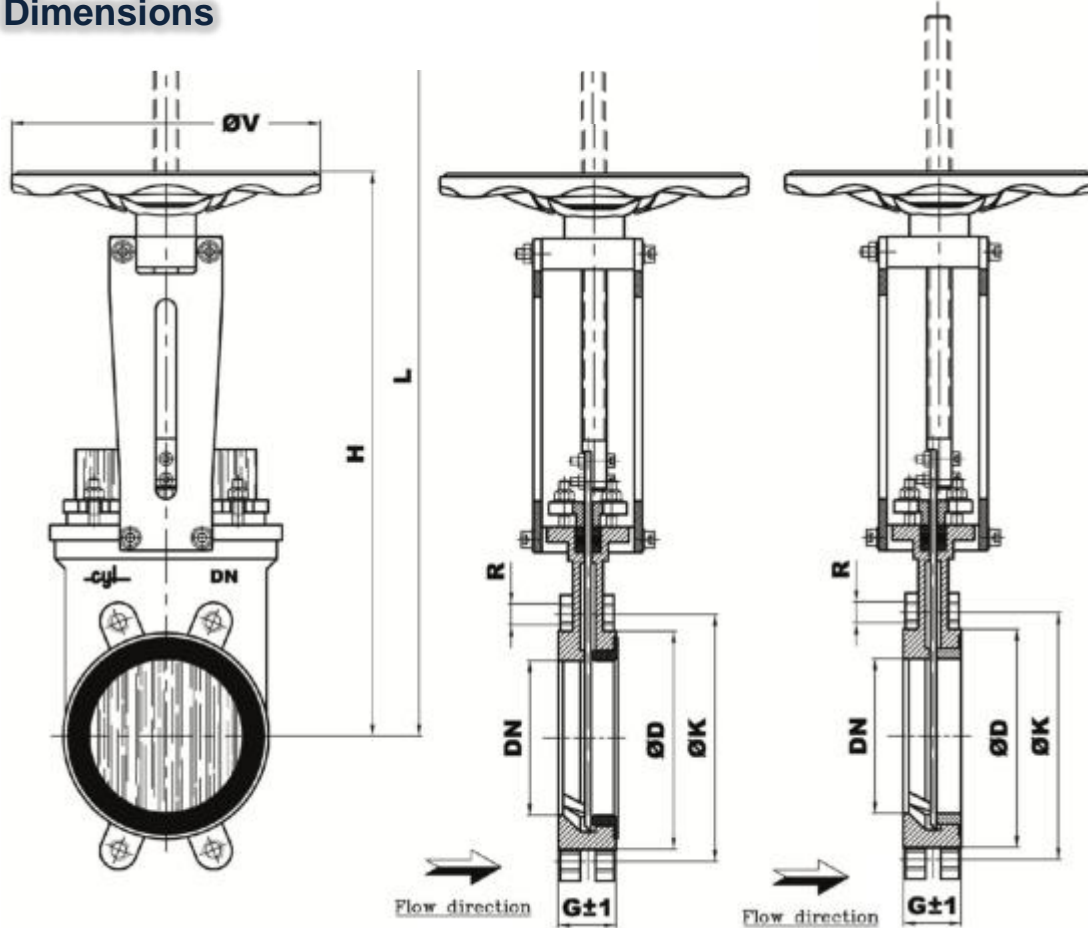
No.	Part	Material
1	Tight seat	EPDM (standard)
		PTFE, VITON, POLIURETHAN, NBR (optional)
1.1	Metal seat	1.041 (standard)
		SS316 (optional)
2	Gate	SS316 (standard)
		DUPLEX, SMO254, SS316TI SS316L (optional)
		GJL250 (standard)
3	Body	GJS400, CF8M, DUPLEX, SMO254 (optional)
4	Screw and nut	A-4
5	Packing material	PTFE+EPDM (standard)
		PTFE+VITON, ARAMIDE, GRAPHITE (optional)
6	Packing gland	GJS400 (standard)
		CF8M, DUPLEX, SMO254 (optional)
7	Open shroud	1.0580 (standard)
		SS316 (optional)
-	Stem	SS316
-	Bearing	1.0401 (standard)
-	Handwheel	1.0037
-	Pneumatic act.	Aluminium

Temperature range

Material	Min.temperature (°C)	Max.temperature (°C)
NBR	-30	+80
EPDM	-40	+90
VITON	-40	+180
PTFE	-10	+160
POLIURETHAN	-10	+50
WHITE NBR	-10	+60
RED SILICONE	-20	+120

KNIFE GATE VALVE UNI-directional, TYPE MU DN50 – 300, PN10 – 16

Dimensions



DN	G±1	H	L	ØV	L1	M	S	ØCil	Min. torque (N.m)	Max. torque (N.m)	Spindle thread	Max.work. pressure (bar)
50	43	306	366	175	406	147	¼%G	80	8	16	Tr18x4i	10
65	43	336	411	175	448	160	¼%G	80	10	17	Tr18x4i	10
80	46	366	448	225	490	177	¼%G	100	12	19	Tr20x4i	10
100	52	393	495	225	537	197	¼%G	100	15	22	Tr20x4i	10
125	56	446	573	225	625	232	3/8%G	125	17	24	Tr20x4i	10
150	56	548	699	300	757	267	3/8%G	160	25	50	Tr24x5i	10
200	60	659	860	300	928	327	½%G	190	27	53	Tr24x5i	8
250	68	733	984	300	1050	375	½%G	190	50	69	Tr24x5i	7
300	78	870	1172	400	1229	428	½%G	190	63	84	Tr28x5i	7