

### Metal/metal seated (DN50-600)

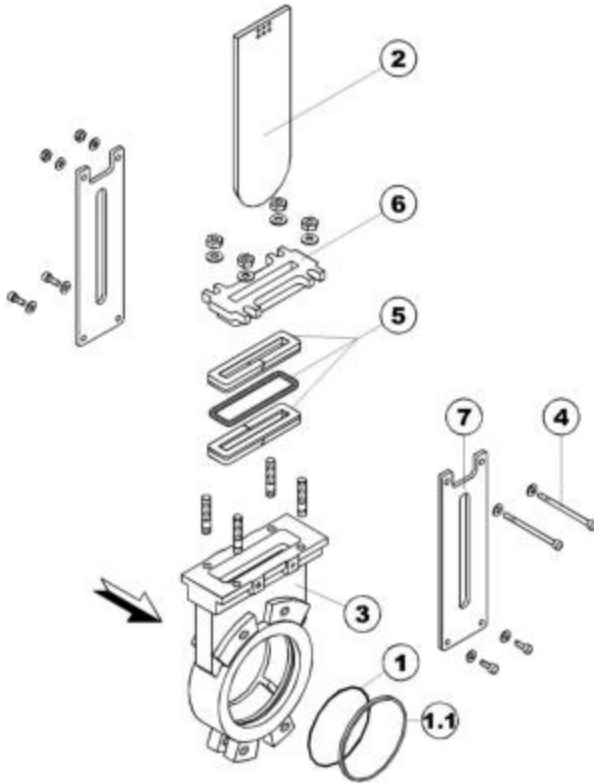


### Description

- Uni-directional metal/metal seated knife gate valve
- 100% tightness, zero leakage on one sense
- short face-to-face dimension; easy to install between flanges
- **3 body styles:** semi lugged  
fully lug-between flanges  
lug-end valve
- **execution:**  
MUV . with rising stem  
MUF . with non-rising stem
- knife gate valves are with full port without dead space
- **assembly:** vertical stem position is recommended  
assembly between PN10/16
- **operation:** handwheel, lever (DN50-150), electric actuator, pneumatic actuator

## KNIFE GATE VALVE UNI - directional TYPE MU DN50 – 600, PN10 - 16

### Components - specifications



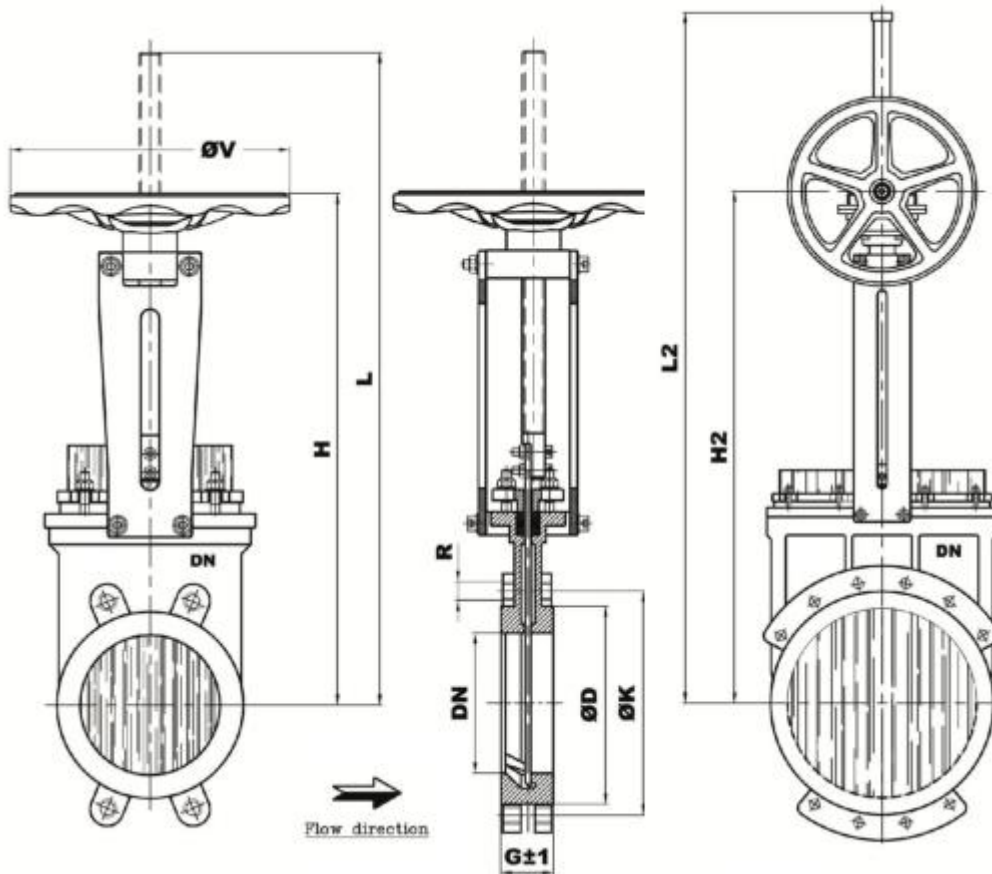
| No. | Part             | Material                                        |
|-----|------------------|-------------------------------------------------|
| 1   | Tight seat       | EPDM (standartně)                               |
|     |                  | PTFE, VITON,<br>POLIURETHAN,<br>NBR (voliteln ) |
|     |                  |                                                 |
| 1.1 | Fastening ring   | SS316 (voliteln )                               |
| 2   | Gate             | SS316 (standartn )                              |
|     |                  | DUPLEX, SMO254, SS316TI                         |
|     |                  | SS316L (voliteln )                              |
| 3   | Body             | GJL250 (standartn )                             |
|     |                  | GJS400, CF8M, DUPLEX,<br>SMO254 (voliteln )     |
|     |                  |                                                 |
| 4   | Screw and nut    | A-4                                             |
| 5   | Packing material | PTFE+EPDM (standartn )                          |
|     |                  | PTFE+VITON, ARAMIDE,<br>GRAPHITE (voliteln )    |
|     |                  |                                                 |
| 6   | Packing gland    | GJS400 (standartn )                             |
|     |                  | CF8M,DUPLEX,<br>SMO254 (voliteln )              |
|     |                  |                                                 |
| 7   | Open shroud      | 1.0580 (standartn )                             |
|     |                  | SS316 (optional)                                |
| -   | Stem             | SS316                                           |
| -   | Bearing          | 1.0401 (standartn )                             |
|     |                  | SS316 (optional)                                |
| -   | Handwheel        | 1.0037                                          |
| -   | Pneumatic act.   | Aluminium                                       |

### Temperature range

| Material     | Min.temperature (°C) | Max.temperature (°C) |
|--------------|----------------------|----------------------|
| NBR          | -30                  | +80                  |
| EPDM         | -40                  | +90                  |
| VITON        | -40                  | +180                 |
| PTFE         | -10                  | +160                 |
| POLIURETHAN  | -10                  | +50                  |
| WHITE NBR    | -10                  | +60                  |
| RED SILICONE | -20                  | +120                 |

## KNIFE GATE VALVE UNI-directional, TYPE MU DN50 – 600, PN10 - 16

### Dimensions /mm/



| DN  | G±1 | H    | L    | ØV  | L2   | H2   | L1   | M   | ØCil | S      | Min.torque (N.m) | Max.torque (N.m) | Spindle threaded | Max.work pressure (°C) |
|-----|-----|------|------|-----|------|------|------|-----|------|--------|------------------|------------------|------------------|------------------------|
| 50  | 40  | 306  | 366  | 175 | -    | -    | 406  | 147 | 80   | 1/4" G | 8                | 16               | Tr18x4i          | 10                     |
| 65  | 40  | 338  | 411  | 175 | -    | -    | 448  | 160 | 80   | 1/4" G | 10               | 17               | Tr18x4i          | 10                     |
| 80  | 50  | 366  | 448  | 225 | -    | -    | 490  | 177 | 100  | 1/4" G | 12               | 19               | Tr20x4i          | 10                     |
| 100 | 50  | 393  | 495  | 225 | -    | -    | 537  | 197 | 100  | 1/4" G | 15               | 22               | Tr20x4i          | 10                     |
| 125 | 50  | 446  | 573  | 225 | -    | -    | 625  | 232 | 125  | 3/8" G | 17               | 24               | Tr20x4i          | 10                     |
| 150 | 60  | 548  | 699  | 300 | -    | -    | 757  | 267 | 160  | 3/8" G | 25               | 50               | Tr24x5i          | 10                     |
| 200 | 60  | 659  | 860  | 300 | -    | -    | 928  | 327 | 190  | 1/2" G | 27               | 53               | Tr24x5i          | 8                      |
| 250 | 70  | 733  | 984  | 300 | -    | -    | 1050 | 375 | 190  | 1/2" G | 50               | 69               | Tr24x5i          | 7                      |
| 300 | 70  | 870  | 1172 | 400 | -    | -    | 1229 | 428 | 190  | 1/2" G | 63               | 84               | Tr28x5i          | 6                      |
| 350 | 96  | 924  | 1276 | 400 | -    | -    | 1354 | 499 | 250  | 1/2" G | 78               | 102              | Tr28x5i          | 6                      |
| 400 | 100 | 1021 | 1423 | 400 | 1387 | 1061 | 1501 | 549 | 250  | 1/2" G | 90               | 110              | Tr28x5i          | 5                      |
| 450 | 106 | 1119 | 1562 | 500 | 1548 | 1137 | 1641 | 590 | 300  | 1/2" G | 215              | 259              | Tr40x7i          | 5                      |
| 500 | 110 | 1250 | 1758 | 500 | 1721 | 1317 | 1817 | 656 | 300  | 1/2" G | 223              | 320              | Tr40x7i          | 4                      |
| 600 | 110 | 1430 | 2043 | 500 | 1989 | 1505 | 2107 | 757 | 300  | 1/2" G | 249              | 388              | Tr40x7i          | 4                      |