

CHECK VALVE DISCO-WAFER TYPE V-WC DN 15 – 100 PN 40



Features

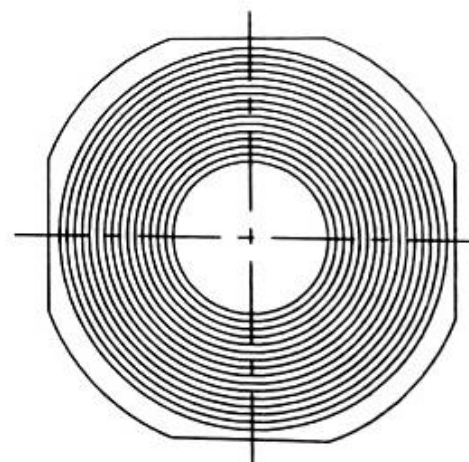
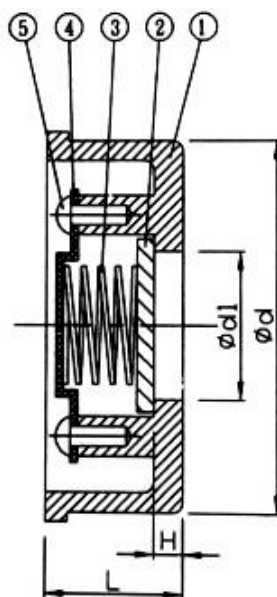
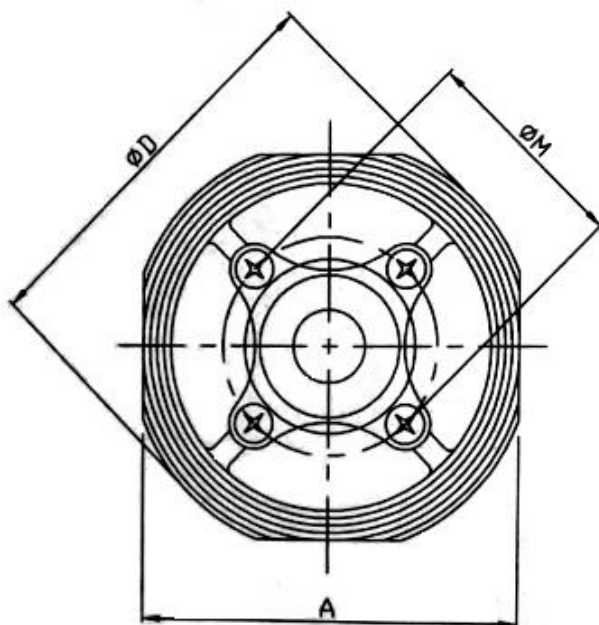
- short face-to-face
- stainless steel execution
- disc pressed with spring

Application

- chemical industry
- pharma industry
- food industry

Assembly

- horizontal pipeline , vertical pipeline when flow from bottom
- between PN6-PN40 flanges



Dimensions /mm/

DN	$\varnothing D$	A	L	$\varnothing d$	$\varnothing d1$	weight /kg/
15	53	46	16,5	15,0	43	0,11
20	63	55	19,5	20,0	53	0,19
25	73	65	22	25,4	63	0,30
32	84	78	28	30,0	75	0,40
40	94	88	32	38,0	86	0,60
50	107	98	40	47,0	96	0,88
65	126	118	46	62,5	115	0,88
80	144	134	50	77,0	130	1,86
100	164	154	60	96,0	151	3,30

Pos.	Part	Material
1	Body	ASTM A351 CF8
2	Disc	ASTM A351 CF8
3	Spring	AISI316
4	Cover	AISI304
5	Bolt	AISI304

Operating conditions	
Nominal pressure	40
Min.allowable temperature	-120°C
Max operating pressure	40 . 38 - 37
Temp. related to pressure	100 . 200 - 300