

## CHECK VALVE TYPE Z1 DN 50 – 600 PN 10



### Description

- wafer type construction
- rubberised body
- double doors made from stainless steel
- doors pressed by springs
- max.temperature is 120°C

### Natural gas

- if for gas requested, please specify in order ( natural gas execution type Z1-17B
- tightness through min. delta p=0,35 bar
- each valve labeled with production No.

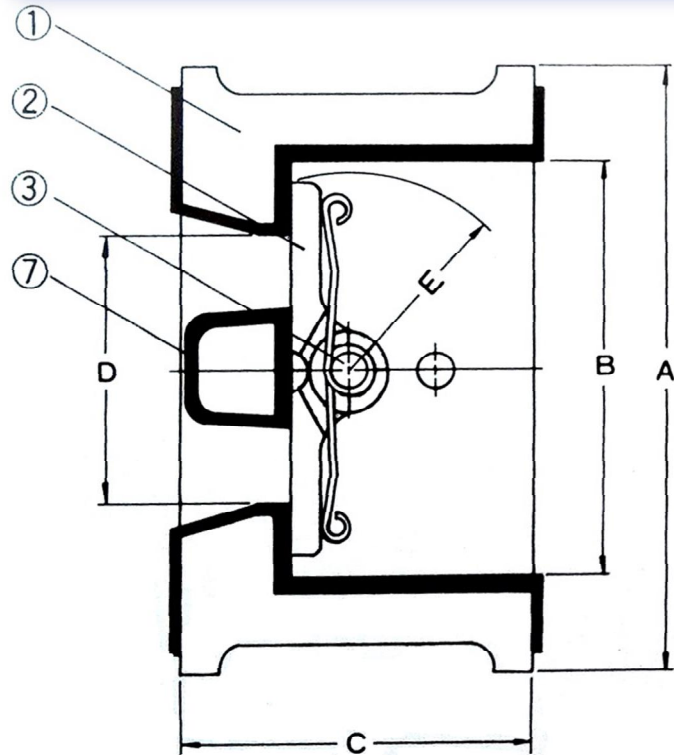
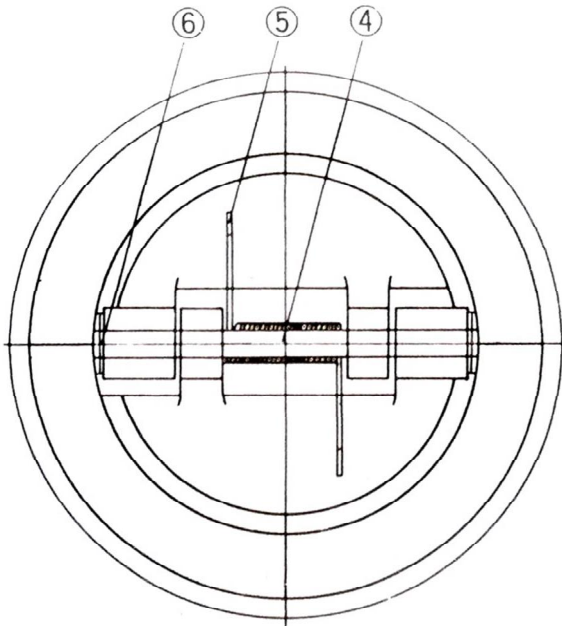
### Assembly

- between flanges PN10-16 in horizontal pipeline
- vertical pipeline if pressure from bottom

### Main advantages

- short face-to-face
- low weight
- no pipeline hammer through doors with spring
- material . rubberised body with SS . doors
- general use for water, demineralized water, chemical agents, etc.

## CHECK VALVE TYPE Z1 DN 50-600 PN 10 Materials and dimensions



DN	A	B	C	D	E	Kv	Weight /kg/
50	104	71	60	46	32	90	1,9
65	123	80	67	51	35	90	2,8
80	134	92	73	67	42	150	3,4
100	158	119	73	90	55	300	4,9
125	190	143	83	110	66	800	7,5
150	219	169	98	139	80	800	10,7
200	270	225	127	190	107	1700	18,6
250	332	280	146	240	132	3000	29,5
300	377	329	181	283	154	4000	46,2
350	420	359	150	310	173	5350	54
400	483	420	160	359	204	7400	107
450	538	460	181	406	227	10000	140
500	595	512	212,5	457	248	13000	173
600	698	612	212,5	558	300	24000	262

### Materials and marking

type Z1

Body			
Pos.	Material	Mark	Code
1	cast iron GG 25	0.6025	1
	ductile iron GGG 40	0.7040	2
	stainless steel	1.4308	7
	stainless steel	1.4408	8

Packing			
Pos.	Material	Mark.	Code
7	stainless steel	1.4301	7
	stainless steel	1.4408	8

Disc			
Pos.	Material	Temp.range	Code
2	EPDM	- 20°C + 120°C	E
	NBR	-20°C + 80°C	B
	viton	-20°C + 150°C	V

Pos.	Part	Material
3	Axis	A 182
4	stop piece	A 182
5	spring	SUS 316
6	washer	PTFE